

# PRODUCTS



## CONTENT

|                           |    |
|---------------------------|----|
| Product overview          | 6  |
| Stiff Boom Crane Series   | 8  |
| Knuckle Boom Crane Series | 14 |
| Special Vehicles          | 22 |
| Industry Applications     | 23 |
| Service                   | 24 |









#### **HISTORY:**

On February 28th, 2012, Sany Group and Palfinger Group signed a cooperation agreement, officially founding SanyPalfinger SPV Equipment Co., Ltd. which aims at designing, manufacturing, and selling truck mounted cranes as well as special vehicle equipment.

SPV devotes itself to the development of innovative truck mounted cranes to be the first class brand with excellent products and service.

With a win-win cooperation of Sany and Palfinger, it is clear that the joint venture will sustain the excellent quality from its parent companies and make "innovation, excellence and internationalization" as its operation concept to achieve the goal of becoming the leader of global special vehicles and equipment manufacturer.

#### **OUR VISION:**

SANY PALFINGER is focused on superior stakeholder returns by serving customers and employees according to our company values, realizing number one or two market position in all product categories, providing Industry leading product and service quality; achieving operational excellence through a culture of process orientation and continuous improvement.

#### **OUR MISSION:**

SANY PALFINGER is committed to providing the most innovative, flexible, and affordable handling solutions from China to the World.





# PRODUCT OVERVIEW



## STIFF BOOM CRANE

INDIVIDUAL VEHICLE  
CONFIGURATION ACCORDING TO NEEDS

- European Quality Standards, HD Paint Technology and Service Friendly Designs to ensure the best Reliability, Performance, and Safety in the Industry
- Best Lift-to-Weight Ratio due to the consequent utilization of High Strength Steel on all main components
- Complete Vehicle Installations directly from SANY PALFINGER



## KNUCKLE BOOM CRANE

GREAT WORKING RANGE AND  
HIGH WORKING SPEED

- European Design to ensure the best Reliability, Performance and Safety
- The Knuckle Boom Crane Structure ensures a maximum of movement flexibility for the crane operator
- Various attachments and accessories available (rope winches, grabs, forks, etc...)





### **AERIAL WORKING PLATFORM**

COMPACT DESIGN  
WITH MAXIMIZED LIFTING HEIGHT

- ➔ Small and clever for use in city centres
- ➔ High maneuverability due to the extremely short wheelbase
- ➔ Flexible access to heights due to the combination of joints and the telescopic boom



### **SPECIAL VEHICLES**

CUSTOMIZED SOLUTIONS  
FOR ANY JOB

- ➔ City Management Vehicles
- ➔ Special Purpose Vehicles
- ➔ Hook Loader Applications
- ➔ Self-propelled Scissor Lifts

# STIFF BOOM CRANES

The SPS Product Line covers a broad range of Stiff Boom Cranes from 3.2T to 20T Lifting Capacity.







### WORKING LIGHTS

- Better Operation Safety in dust and darkness
- Optimized visibility in the loading area
- LED working lights optionally available



### ERGONOMIC DESIGN

- Practical and Attractive
- Throughout the design phase Sany Palfinger follows the general principles of ergonomics to ensure a comfortable and safe crane operation



### INTEGRATED ELECTRIC SYSTEM

- Robust, reliable, and service friendly design
- Network of modular components connected through standardized interfaces



### ADVANCED PROPORTIONAL HYDRAULIC SYSTEM

- Allows the operator to use multiple functions simultaneously
- Increases working speed



### HIGH PRESSURE AND RETURN FILTER

- SANY PALFINGER installs two oil filters on each crane as a standard
- Ensures proper functionality and lifetime



### HIGH DENSITY PAINT SYSTEM

- Demonstrates superior performance
- Long-term UV-resistance
- Attractive aesthetics

# STIFF BOOM CRANES

## 2 AXLE TRUCKS



**SPS 8000**

|                           | SPS 8000 A      | SPS 8000 B      |
|---------------------------|-----------------|-----------------|
| No. of Booms              | 3               | 4               |
| Lifting Moment            | 8 mt            | 8 mt            |
| Lifting Capacity          | 3200 kg (2.5 m) | 3200 kg (2.2 m) |
| Max. Outreach             | 7.8 m           | 10.2 m          |
| Min. Gross Vehicle Weight | 8 t             | 8 t             |



**SPS 12500**

|                           | SPS 12500 A     | SPS 12500 B     |
|---------------------------|-----------------|-----------------|
| No. of Booms              | 3               | 4               |
| Lifting Moment            | 12.5 mt         | 12.5 mt         |
| Lifting Capacity          | 5000 kg (2.5 m) | 5000 kg (2.5 m) |
| Max. Outreach             | 9 m             | 11.5 m          |
| Min. Gross Vehicle Weight | 16 t            | 16 t            |



**SPS 16000**

|                           | SPS 16000 A     | SPS 16000 B     |
|---------------------------|-----------------|-----------------|
| No. of Booms              | 3               | 4               |
| Lifting Moment            | 16 mt           | 16 mt           |
| Lifting Capacity          | 7500 kg (2.1 m) | 7500 kg (2.1 m) |
| Max. Outreach             | 9.5 m           | 12.3 m          |
| Min. Gross Vehicle Weight | 16 t            | 16 t            |



**SPS 17500**

|                           | SPS 17500 B     |
|---------------------------|-----------------|
| No. of Booms              | 4               |
| Lifting Moment            | 17,5 mt         |
| Lifting Capacity          | 8000 kg (2.2 m) |
| Max. Outreach             | 13.5 m          |
| Min. Gross Vehicle Weight | 16 t            |



# STIFF BOOM CRANES

## 3 AXLE TRUCKS



### SPS 20000

|                           | SPS 20000 B     | SPS 20000 C     |
|---------------------------|-----------------|-----------------|
| No. of Booms              | 4               | 5               |
| Lifting Moment            | 20 mt           | 20 mt           |
| Lifting Capacity          | 8000 kg (2.5 m) | 8000 kg (2.5 m) |
| Max. Outreach             | 14 m            | 17.7 m          |
| Min. Gross Vehicle Weight | 16 t            | 16 t            |



### SPS 25000

|                           | SPS 25000 B      | SPS 25000 C      |
|---------------------------|------------------|------------------|
| No. of Booms              | 4                | 5                |
| Lifting Moment            | 25 mt            | 25 mt            |
| Lifting Capacity          | 11000 kg (2.3 m) | 11000 kg (2.3 m) |
| Max. Outreach             | 14 m             | 17.7 m           |
| Min. Gross Vehicle Weight | 25 t             | 25 t             |



### SPS 30000

|                           | SPS 30000 B      |
|---------------------------|------------------|
| No. of Booms              | 4                |
| Lifting Moment            | 30 mt            |
| Lifting Capacity          | 12000 kg (2.5 m) |
| Max. Outreach             | 14.5 m           |
| Min. Gross Vehicle Weight | 25 t             |

# STIFF BOOM CRANES 4 AXLE TRUCKS



## SPS 35000

|                           | SPS 35000 B      | SPS 35000 C      |
|---------------------------|------------------|------------------|
| No. of Booms              | 4                | 5                |
| Lifting Moment            | 35 mt            | 35 mt            |
| Lifting Capacity          | 14000 kg (2.5 m) | 14000 kg (2.5 m) |
| Max. Outreach             | 15 m             | 18.4 m           |
| Min. Gross Vehicle Weight | 25 t             | 25 t             |



## SPS 50000

|                           | SPS 50000 C      |
|---------------------------|------------------|
| No. of Booms              | 5                |
| Lifting Moment            | 50 mt            |
| Lifting Capacity          | 20000 kg (2.5 m) |
| Max. Outreach             | 21 m             |
| Min. Gross Vehicle Weight | 31 t             |



# POPULAR OPTIONS



## LOWER SEAT

- ➔ Ensures proper visibility and safety
- ➔ Allows the operator to comfortably control the crane from an elevated position
- ➔ Enhanced version of the floor control



## OVERLOAD PROTECTION SYSTEM

- ➔ Built in safety function
- ➔ Stops all movements that could further increase the lifting moment
- ➔ Prevents the crane from being structurally damaged



## RADIO REMOTE CONTROL

- ➔ Allows to remotely control the crane
- ➔ Provides the best-possible overview of the loading process and ensures higher efficiency in use



## TOP SEAT

- ➔ Optimal functionality and ergonomics
- ➔ Provides excellent visibility and easy operation



## LOAD INDICATOR

- ➔ Effective and robust solution to provide the crane operator valuable information about the current load situation



## TWO SPEED WINCH

- ➔ Designed to maximize the efficiency
- ➔ Allows to double the line speed of the winch when less than half of the maximum load is suspended

# KNUCKLE BOOM CRANES

The main advantage of the knuckle boom crane is the ability to fold the outer boom which results in a greater working range and higher working speed.







#### HIGH DENSITY PAINT SYSTEM

- Demonstrates superior performance
- Long-term UV-resistance
- Attractive aesthetics



#### ERGONOMIC CRANE CONTROL

- Operating levers for all crane functions are arranged ergonomically on the console
- Comfortable and efficient working
- Easy to service



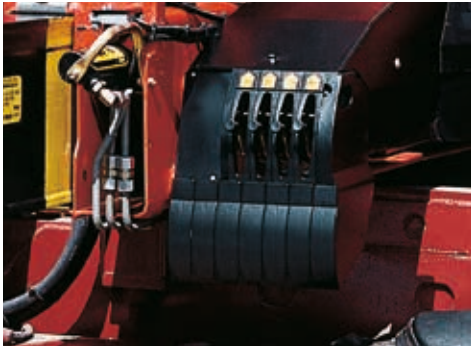
#### LOAD HOLDING VALVE

- Prevents the crane boom from dropping
- Fitted as standard on all cylinders
- Valves are positioned in such a way that they are protected from damage



#### ADJUSTABLE SLIDE BLOCKS

- Ensure optimal lateral guidance of the extension system



#### FUNCTION DESIGN

- Practical and attractive
- Enclosure of the entire electronic system



#### HIGH SPEED EXTENSION

- Speeds up the extension boom system
- Increases working speed and efficiency
- Time saving



# 



**SPK 6500**

|                           | SPK 6500 A | SPK 6500 B |
|---------------------------|------------|------------|
| No of Extension Booms     | 2          | 3          |
| Lifting Moment            | 5.8 mt     | 5.8 mt     |
| Lifting Capacity          | 3200 kg    | 3140 kg    |
| Max. Outreach             | 7.6 m      | 9.6 m      |
| Min. Gross Vehicle Weight | 8 t        | 8 t        |



**SPK 8500**

|                           | SPK 8500 A | SPK 8500 B |
|---------------------------|------------|------------|
| No of Extension Booms     | 2          | 3          |
| Lifting Moment            | 7.6 mt     | 7.6 mt     |
| Lifting Capacity          | 3200 kg    | 3140 kg    |
| Max. Outreach             | 7.6 m      | 9.6 m      |
| Min. Gross Vehicle Weight | 16 t       | 16 t       |



**SPK 10000**

|                           | SPK 10000 A | SPK 10000 B | SPK 10000 C |
|---------------------------|-------------|-------------|-------------|
| No of Extension Booms     | 2           | 3           | 4           |
| Lifting Moment            | 9.5 mt      | 9.5 mt      | 9.5 mt      |
| Lifting Capacity          | 5580 kg     | 5460 kg     | 5360 kg     |
| Max. Outreach             | 8.2 m       | 10.3 m      | 12.4 m      |
| Min. Gross Vehicle Weight | 16 t        | 16 t        | 16 t        |



### SPK 12000

|                           | SPK 12000 A | SPK 12000 B | SPK 12000 C |
|---------------------------|-------------|-------------|-------------|
| No of Extension Booms     | 2           | 3           | 4           |
| Lifting Moment            | 11.6 mt     | 11.6 mt     | 11.6 mt     |
| Lifting Capacity          | 6680 kg     | 6560 kg     | 6460 kg     |
| Max. Outreach             | 8.2 m       | 10.3 m      | 12.4 m      |
| Min. Gross Vehicle Weight | 16 mt       | 16 mt       | 16 mt       |



### SPK 15500

|                           | SPK 15500 A | SPK 15500 B | SPK 15500 C |
|---------------------------|-------------|-------------|-------------|
| No of Extension Booms     | 2           | 3           | 4           |
| Lifting Moment            | 14.6 mt     | 14.6 mt     | 14.6 mt     |
| Lifting Capacity          | 6100 kg     | 6000 kg     | 5850 kg     |
| Max. Outreach             | 8.1 m       | 10.3 m      | 12.4 m      |
| Min. Gross Vehicle Weight | 16 mt       | 16 mt       | 16 mt       |



### SPK 18500

|                           | SPK 18500 A | SPK 18500 B | SPK 18500 C |
|---------------------------|-------------|-------------|-------------|
| No of Extension Booms     | 2           | 3           | 4           |
| Lifting Moment            | 18.3 mt     | 18.3 mt     | 18.3 mt     |
| Lifting Capacity          | 8000 kg     | 8000 kg     | 8000 kg     |
| Max. Outreach             | 8.3 m       | 10.3 m      | 12.4 m      |
| Min. Gross Vehicle Weight | 16 mt       | 16 mt       | 16 mt       |

# 



**SPK 23500**

|                           | SPK 23500 A | SPK 23500 B | SPK 23500 C |
|---------------------------|-------------|-------------|-------------|
| No of Extension Booms     | 2           | 3           | 4           |
| Lifting Moment            | 23 mt       | 23 mt       | 23 mt       |
| Lifting Capacity          | 10000 kg    | 10000 kg    | 10000 kg    |
| Max. Outreach             | 8.2 m       | 10.3 m      | 12.4 m      |
| Min. Gross Vehicle Weight | 16 mt       | 16 mt       | 16 mt       |



**SPK 32080**

|                           | SPK 32080 A | SPK 32080 B | SPK 32080 C |
|---------------------------|-------------|-------------|-------------|
| No of Extension Booms     | 2           | 3           | 4           |
| Lifting Moment            | 30.4 mt     | 30.4 mt     | 30.4 mt     |
| Lifting Capacity          | 5580 kg     | 5460 kg     | 5360 kg     |
| Max. Outreach             | 8.1 m       | 10.1 m      | 12.2 m      |
| Min. Gross Vehicle Weight | 25 mt       | 25 mt       | 25 mt       |

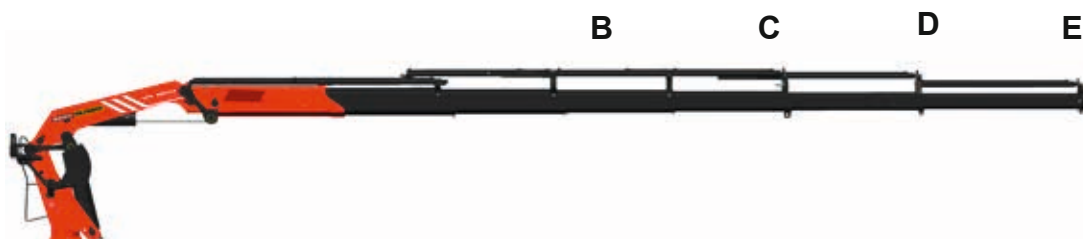


**SPK 36080**

|                           | SPK 36080 A | SPK 36080 B | SPK 36080 C |
|---------------------------|-------------|-------------|-------------|
| No of Extension Booms     | 2           | 3           | 4           |
| Lifting Moment            | 34.8 mt     | 34.8 mt     | 34.8 mt     |
| Lifting Capacity          | 8500 kg     | 8300 kg     | 8100 kg     |
| Max. Outreach             | 8.1 m       | 10.1 m      | 12.1 m      |
| Min. Gross Vehicle Weight | 25 mt       | 25 mt       | 25 mt       |

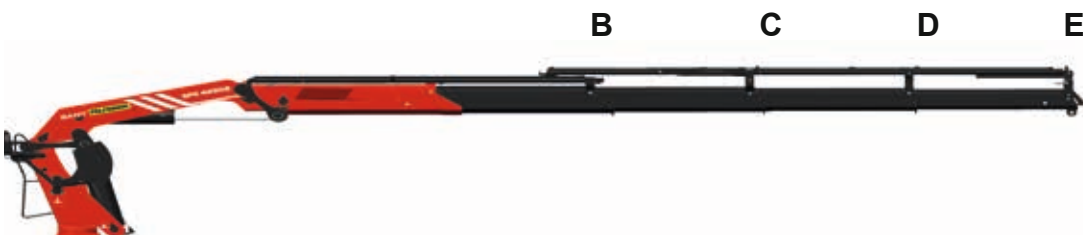


# 



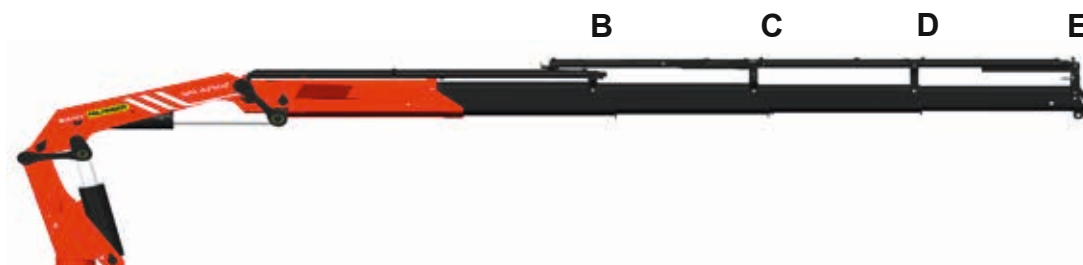
**SPK 38502**

|                           | SPK 38502 B | SPK 38502 C | SPK 38502 D | SPK 38502 E |
|---------------------------|-------------|-------------|-------------|-------------|
| No of Extension Booms     | 3           | 4           | 5           | 6           |
| Lifting Moment            | 38.2 mt     | 38.2 mt     | 38.2 mt     | 38.2 mt     |
| Lifting Capacity          | 12700 kg    | 12500 kg    | 11900 kg    | 11300 kg    |
| Max. Outreach             | 10 m        | 12.1 m      | 14.5 m      | 16.8 m      |
| Min. Gross Vehicle Weight | 25 mt       | 25 mt       | 25 mt       | 25 mt       |



## SPK 42502 MH

|                           | SPK 42502 MH B | SPK 42502 MH C | SPK 42502 MH D | SPK 42502 MH E |
|---------------------------|----------------|----------------|----------------|----------------|
| No of Extension Booms     | 3              | 4              | 5              | 6              |
| Lifting Moment            | 42.3 mt        | 42.3 mt        | 42.3 mt        | 42.3 mt        |
| Lifting Capacity          | 14000 kg       | 13900 kg       | 13200 kg       | 12600 kg       |
| Max. Outreach             | 10 m           | 12.1 m         | 14.5 m         | 16.8 m         |
| Min. Gross Vehicle Weight | 25 mt          | 25 mt          | 25 mt          | 25 mt          |



## SPK 42502 EH

|                           | SPK 42502 EH B | SPK 42502 EH C | SPK 42502 EH D | SPK 42502 EH E |
|---------------------------|----------------|----------------|----------------|----------------|
| No of Extension Booms     | 3              | 4              | 5              | 6              |
| Lifting Moment            | 42.3 mt        | 42.3 mt        | 42.3 mt        | 42.3 mt        |
| Lifting Capacity          | 14000 kg       | 13900 kg       | 13200 kg       | 12600 kg       |
| Max. Outreach             | 10 m           | 12.1 m         | 14.5 m         | 16.8 m         |
| Min. Gross Vehicle Weight | 31 mt          | 31 mt          | 31 mt          | 31 mt          |

# KNUCKLE BOOM CRANES 4 AXLE TRUCKS



**SPK 55502**

|                           | SPK 55502 C | SPK 55502 D | SPK 55502 E |
|---------------------------|-------------|-------------|-------------|
| No of Extension Booms     | 4           | 5           | 6           |
| Lifting Moment            | 53.9 mt     | 53.9 mt     | 53.9 mt     |
| Lifting Capacity          | 19500 kg    | 18600 kg    | 18000 kg    |
| Max. Outreach             | 11.5 m      | 13.7 m      | 16.0 m      |
| Min. Gross Vehicle Weight | 31 mt       | 31 mt       | 31 mt       |



**SPK 61502 MH**

|                           | SPK 61502 MH C | SPK 61502 MH D | SPK 61502 MH E |
|---------------------------|----------------|----------------|----------------|
| No of Extension Booms     | 4              | 5              | 6              |
| Lifting Moment            | 57.3 mt        | 57.3 mt        | 57.3 mt        |
| Lifting Capacity          | 20700 kg       | 19700 kg       | 19200 kg       |
| Max. Outreach             | 11.5 m         | 13.7 m         | 16.0 m         |
| Min. Gross Vehicle Weight | 31 mt          | 31 mt          | 31 mt          |



**SPK 61502 EH**

|                           | SPK 61502 EH C | SPK 61502 EH D | SPK 61502 EH E |
|---------------------------|----------------|----------------|----------------|
| No of Extension Booms     | 4              | 5              | 6              |
| Lifting Moment            | 57.3 mt        | 57.3 mt        | 57.3 mt        |
| Lifting Capacity          | 20700 kg       | 19700 kg       | 19200kg        |
| Max. Outreach             | 11.5 m         | 13.7 m         | 16.0 m         |
| Min. Gross Vehicle Weight | 31 mt          | 31 mt          | 31 mt          |

# POPULAR OPTIONS



## RADIO REMOTE CONTROL

- Allows to remotely control the crane
- Provides the best-possible overview of the loading process and ensures higher efficiency in use



## HOSE EQUIPMENT FOR ATTACHMENTS

- Versatile and user-friendly
- The hose equipment offers an easy means of connecting auxiliary equipment
- Guided in hose trays for protection



## HYDRAULIC OVERLOAD SAFETY DEVICE

- Built in safety function
- Prevents the crane from becoming damaged
- Stops all movements that could further increase the lifting moment



## DIFFERENT OUTRIGGER WIDTH

- The choice of outrigger with the correct width based on the demand for the application provides the best option for a stable and reliable machine



## HIGH SEAT

- Optimal functionality and ergonomics
- Providing excellent visibility and easy operation



## RETURN OIL UTILIZATION

- The high speed of the extension system is a result from the return oil utilization feature, and the generously dimensioned hydraulic pipes
- Increased efficiency



# SPECIAL VEHICLES

SANY PALFINGER provides various lifting solutions such as: AERIAL Working Platforms, Hook Loaders, Self Propelled Scissor Lifts, and City Management Vehicles.



## SELF PROPELLED SCISSOR LIFTS

- Safe and efficient working
- Environmentally friendly due to biodegradable hydraulic fluid
- Ensured safety due to flashing beacons, a motion alarm, and an automotive horn



## TRUCK WITH HOOK LOADER KIT

- High performance in moving containers
- Optimal dead weight to lifting capacity ratio
- Low maintenance and easy service due to functional design
- High value retention



## CITY MANAGEMENT VEHICLES

- Energy and labor saving
- Low dead weight, smart mechanic design, and no secondary pollution
- Development of a green and smart city
- Overall solution and wide product range



## AERIAL WORKING PLATFORMS

- Advanced European technology
- Lighter and thus more energy saving
- Highest possible safety and reliability
- Maximized working range

# INDUSTRY APPLICATIONS

SANY PALFINGER's portfolio of load handling, transport, and logistic solutions are optimized for any application and are suitable for a wide range of industries.



## CONSTRUCTION

- For material transportation and for satisfying lifting needs in construction work



## LOGISTICS

- For a high level of safety and control when transporting valuable goods



## FORESTRY AND AGRICULTURE

- For improving work efficiency in farming and harvesting



## MUNICIPALS

- For aerial work, waste collection, and landscaping



## WASTE MANAGEMENT

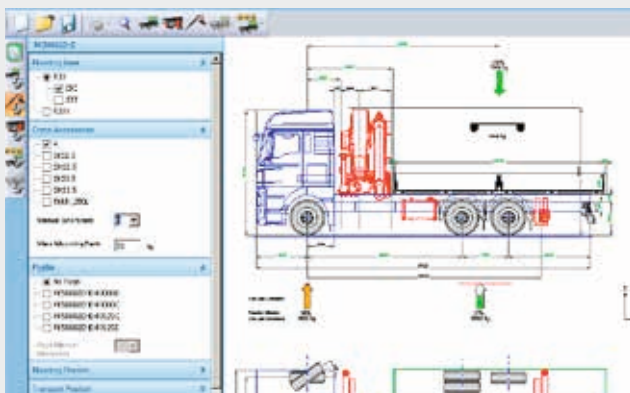
- For efficient handling and transportation of waste materials



## BRICK BUSINESS

- For efficient handling and transportation of building materials

## APPLICATION ENGINEERING



The SANY PALFINGER applications engineering team addresses the requests of our clientele from subframe design to stability calculations and provide the best vehicle integration solutions..

## TECHNICAL SUPPORT



Service is SANY PALFINGER's top priority. Your products are supported by our highly trained, professional, and global service network.

## COMPLETE VEHICLE INSTALLATIONS



Complete vehicle installations are provided directly from SANY PALFINGER. We ensure the most economic vehicle installations at the highest quality level.

## EUROPEAN QUALITY



SANY PALFINGER produces according to European Quality Standards to ensure the best Reliability, Performance, and Safety in the Industry.